

Project

HYDROGEN READY POWER PLANT


Customer

GREENFIELD SOUTH POWER INC.

Applique

GAS TURB. S/N: 299735 / IPS1615904

GEN S/N: GG10870 / 761x090

IP Classification		Export Classification	
GE Project Document Number		GE Project Doc Revision	
GE Project Document Description			
GE Project Document Type		Distribution List	
	Remarks 1		
	GE Document Number	GE Document Revision	Disposal Code
	GE Document Title		

Copyright ©2023 GE Vernova and/or its affiliates
 All rights reserved. The information herein is proprietary information of GE Vernova and/or its affiliates. Thus, it is being provided with the explicit expectation of restricted use. All persons or legal entities receiving this information shall be deemed by the act of its receipt to have contractually agreed to make no duplications, reproductions of any nature by any means, modifications, disclosures, or use any portion of this material; except as is expressly authorized in writing by GE Vernova and/or its affiliates.

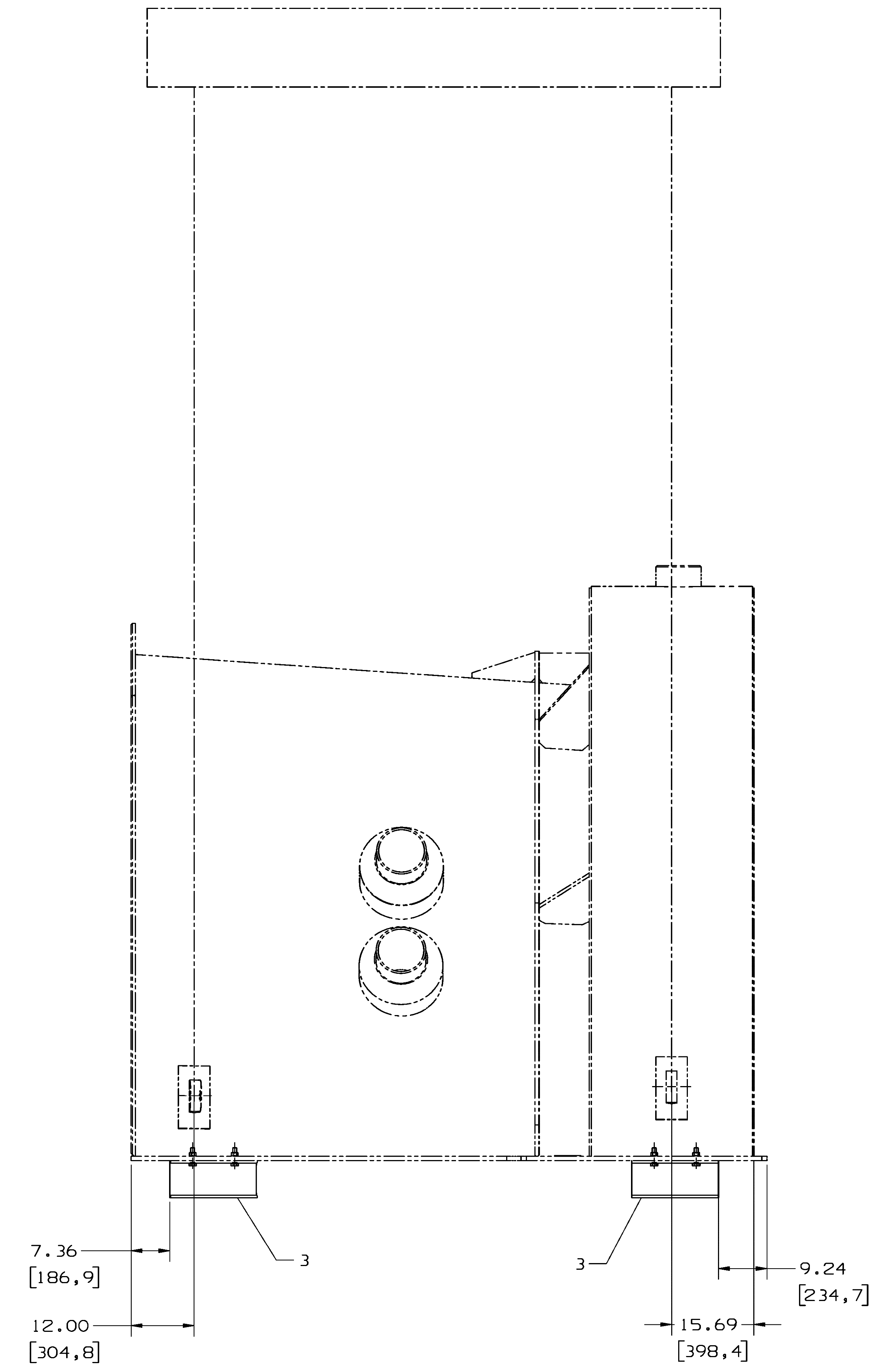
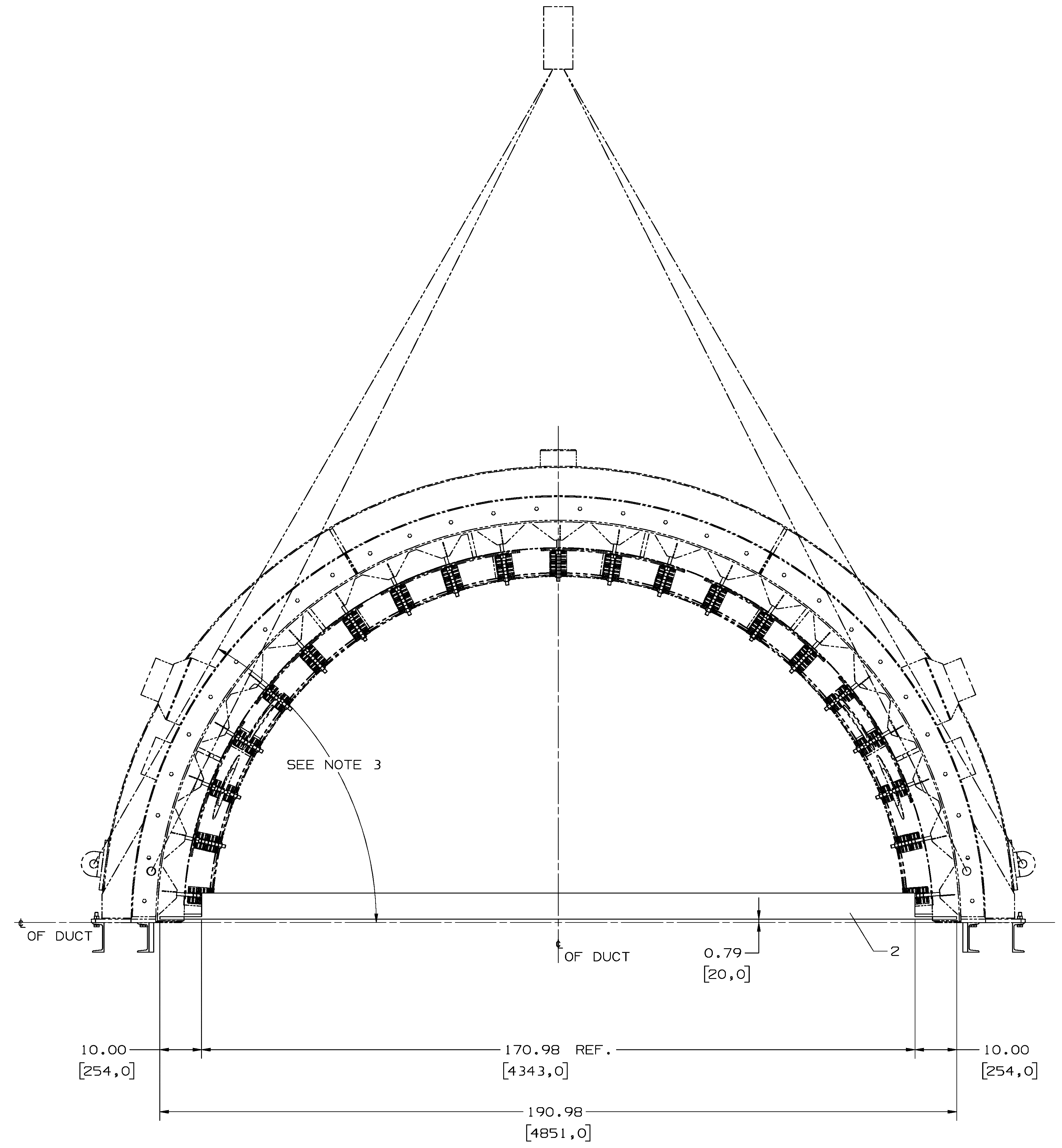
NOTES :

1. ALL DIMENSIONS ARE IN INCHES (MM) UNLESS OTHERWISE SPECIFIED.
2. THE MATING SURFACE OF CRIBBING WITH FLANGES SHALL BE PROTECTED BY PLASTIC FILM.
3. MINIMUM LIFTING SLING ANGLE IS 60 DEGREES. SOFT MATERIAL IS NEEDED BETWEEN SLINGS AND EXTERIOR DUCT SURFACE TO PROTECT PAINT.
4. ALL ANGLE STEEL SHALL BE GB9787-88.
5. DIMENSIONS DERIVED USING CHINESE STRUCTURAL MEMBERS.
6. ALL CHANNEL STEEL SHALL BE GB707.
7. ALL BOLTING HARDWARE SHALL BE HOT DIP GALVANIZED AS PER ASTM A153, CLASS C.

Revision History		Date	Approved
Rev	Description	(YYYY-MM-DD)	
A	LEGEND 1) REVISED 2) ADDED 3) DELETED	2023-11-17	DRAWN BASHA ENGINEER MOHAMMED JAVEED

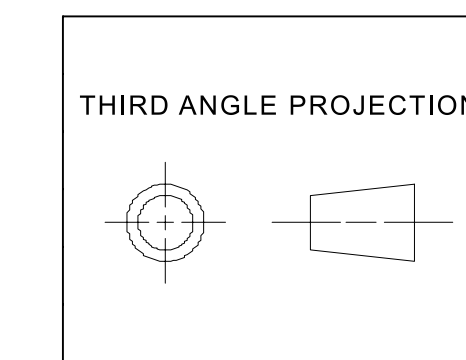
REP	QTY	DESCRIPTION INCHES (MM)	MATERIAL
1	1	L 6.30 [160,0] X 6.30 [160,0] X 0.63 [16,0] LENGTH 218.26 [5543,8]	Q235B ACCORDING TO GB 700
2	1	L 6.30 [160,0] X 6.30 [160,0] X 0.63 [16,0] LENGTH 190.98 [4851,0]	Q235B ACCORDING TO GB 700
3	4	U18 7.09 [180,0] X 2.76 [70,0] X 0.35 [9,0]	Q235B ACCORDING TO GB 700
4	8	HEXAGON HEAD BOLT M20 LENGTH 3.10 [80,0]	ASTM A325M, TYPE1
5	8	HEXAGON NUT M20, HEIGHT 0.74 [18,7]	ASTM A563M, GRADE 10S
6	16	M20 WASHER, THICKNESS 0.12 [3,0]	ASTM F436M, TYPE1

A1



IT.	NOMENCLATURE	IDENT.
4	PACKAGE SPECIFICATION	P23E-AL-0255 389A4331P421
3	GENERAL APPLIED PRACTICE	389A4331P406 389A4331P403
2	WLD APPLIED PRACTICE	389A4331P210 389A4331P200
1	PAINTING APPLIED PRACTICE	389A4431P140 389A4331P130
LIST OF COMPLEMENTARY DOCUMENTS		

Similar To:	Created By:	MLI
NONE	MINJUN YAO	A042
First Made For:	Approved By:	IEC61385 NO.
ML-7K1WFA1-12	WUSONG JIANG	NONE
	Document Type:	Sheet Size
		E
	Document Title:	
	ARRANGEMENT	
	BOTTOM FORWARD HALF DUCT SHIPPING FRAME	
Creation Date (YYYY-MM-DD):	Drawing Number:	Revision
2009-10-09	146E1251	A
	Sheet	
	1 OF 2	



NLR
Copyright © GE Vernova and/or its affiliates 2009-2023
All rights reserved. The information herein is proprietary information of GE Vernova and/or its affiliates. Thus, it is being provided with the explicit expectation of restricted use. All persons or legal entities receiving this information shall be deemed by the act of its receipt to have contractually agreed to make no duplications, reproductions of any nature by any means, modifications, disclosures, or use any portion of this material, except as is expressly authorized in writing by GE Vernova and/or its affiliates.

