

Project

HYDROGEN READY POWER PLANT


Customer

GREENFIELD SOUTH POWER INC.

Applique

GAS TURB. S/N: 299735 / IPS1615904

GEN S/N: GG10870 / 761x090

IP Classification		Export Classification	
GE Project Document Number		GE Project Doc Revision	
GE Project Document Description			
GE Project Document Type		Distribution List	
	Remarks 1		
	GE Document Number	GE Document Revision	Disposal Code
	GE Document Title		

Copyright ©2023 GE Vernova and/or its affiliates
 All rights reserved. The information herein is proprietary information of GE Vernova and/or its affiliates. Thus, it is being provided with the explicit expectation of restricted use. All persons or legal entities receiving this information shall be deemed by the act of its receipt to have contractually agreed to make no duplications, reproductions of any nature by any means, modifications, disclosures, or use any portion of this material; except as is expressly authorized in writing by GE Vernova and/or its affiliates.

8

7

6

5

4

3

2

1

123E1045 1

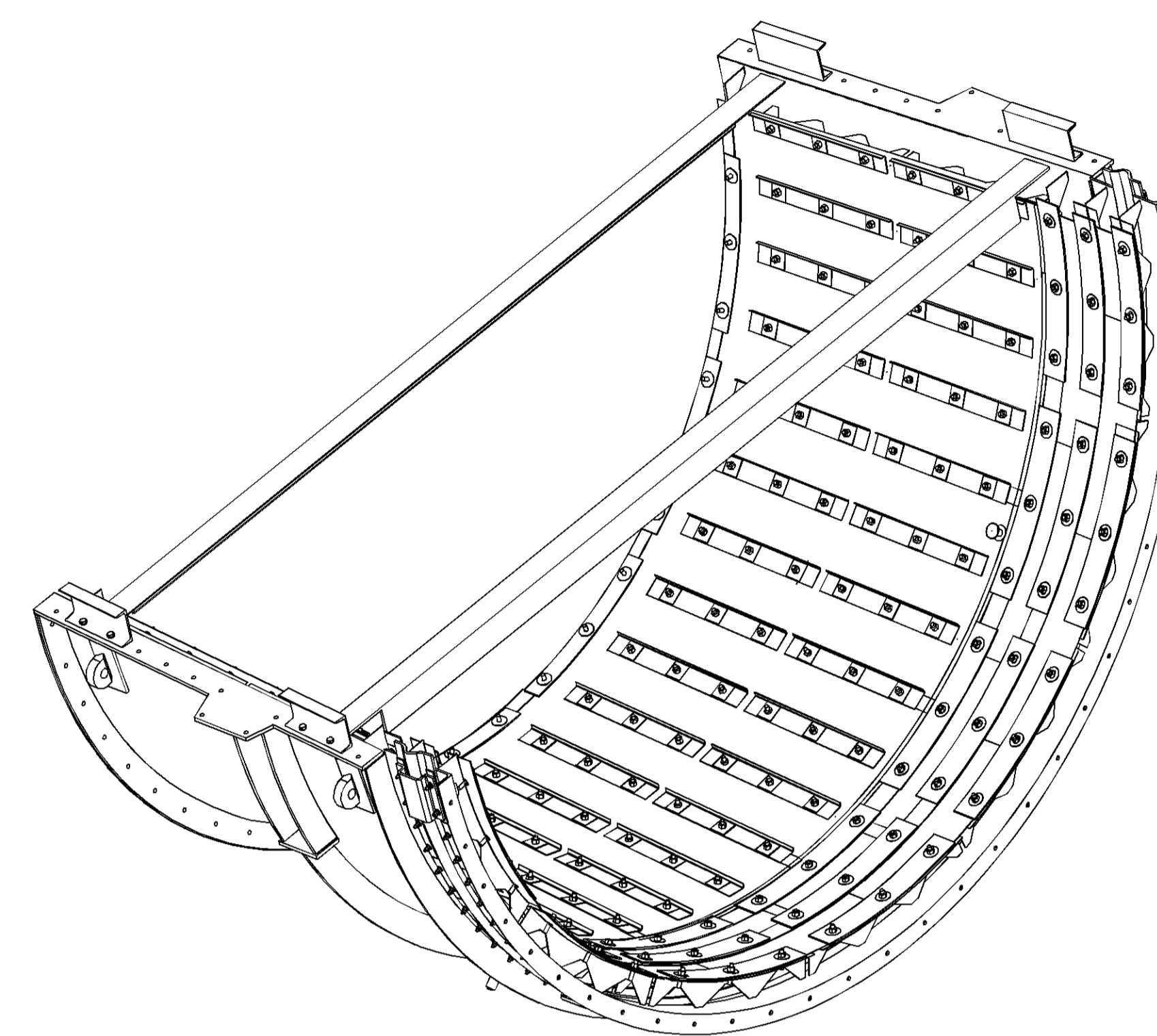
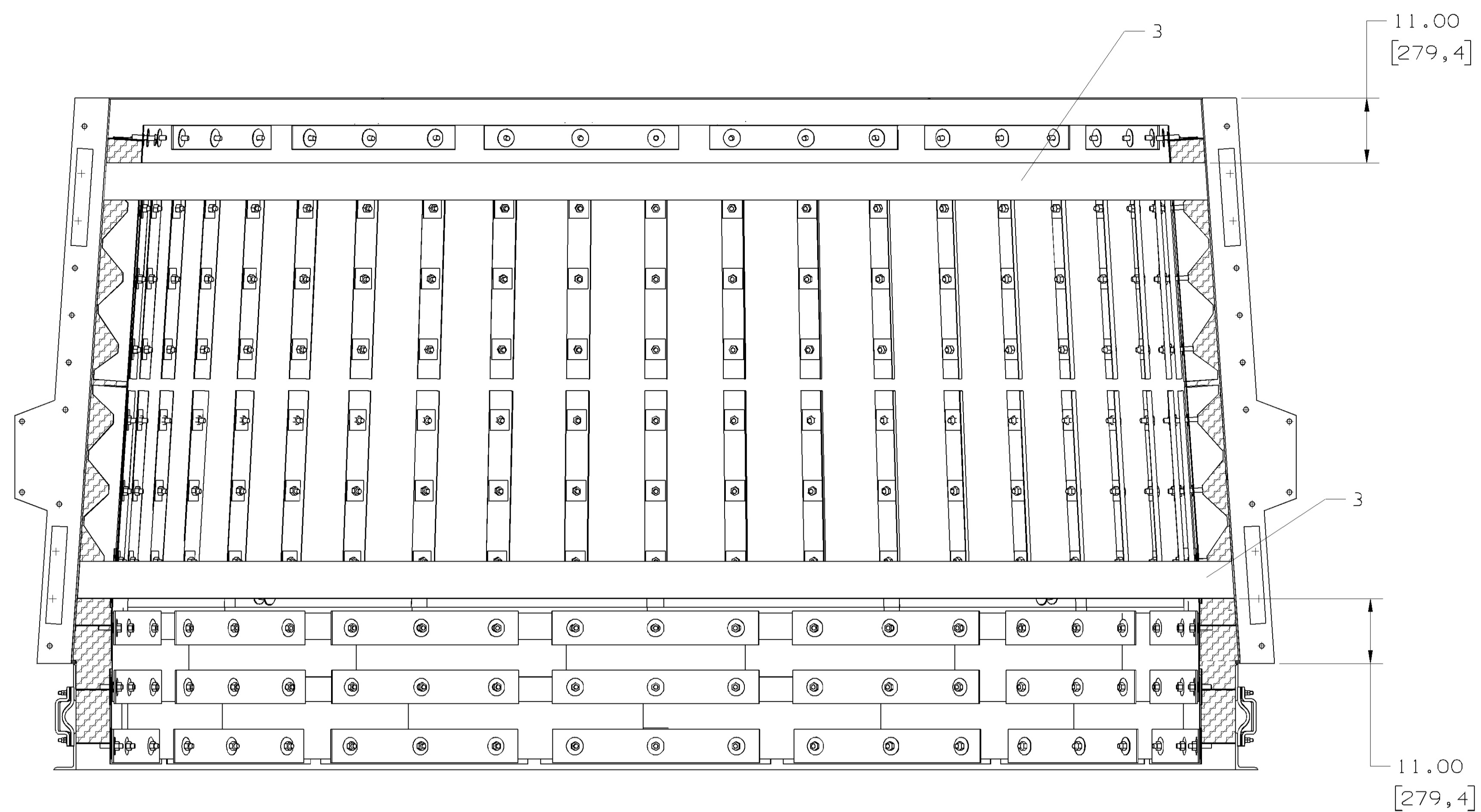
NOTES:

- 1. FOR INFORMATION ONLY. QUANTITIES SHALL BE CALCULATED BY THE SUPPLIER.
- 2. ALL DIMENSIONS ARE IN INCHES (MM) UNLESS OTHERWISE SPECIFIED.
- 3. REP 6 SHALL BE HOT DIP GALVANIZED AS PER ASTM A153, CLASS C.
- 4. EXPANSION BELT AND EXPANSION BELT SHIPPING BRACES SHALL BE INSTALLED AT THE BEGINNING OF THE INSULATION INSTALLATION.

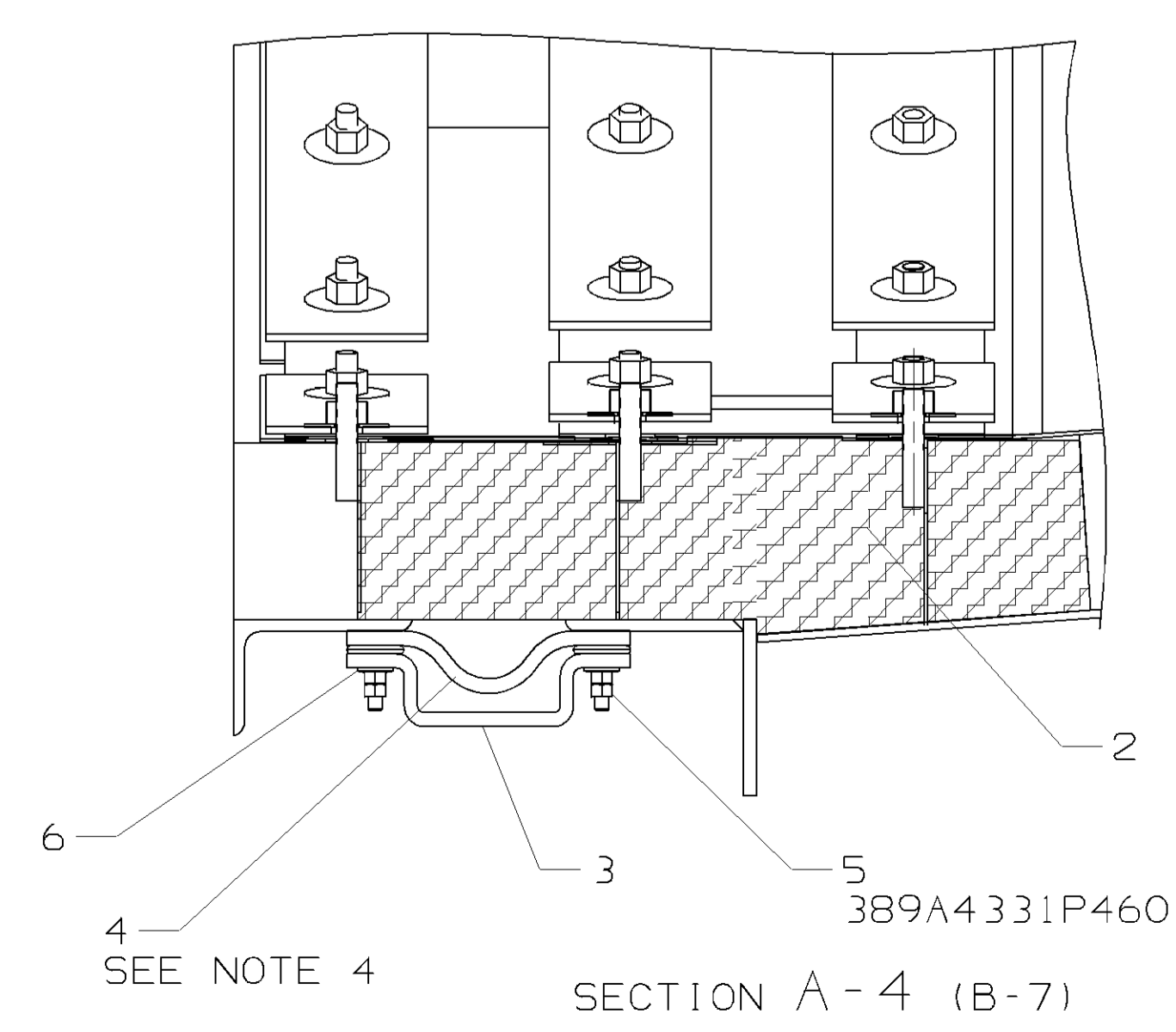
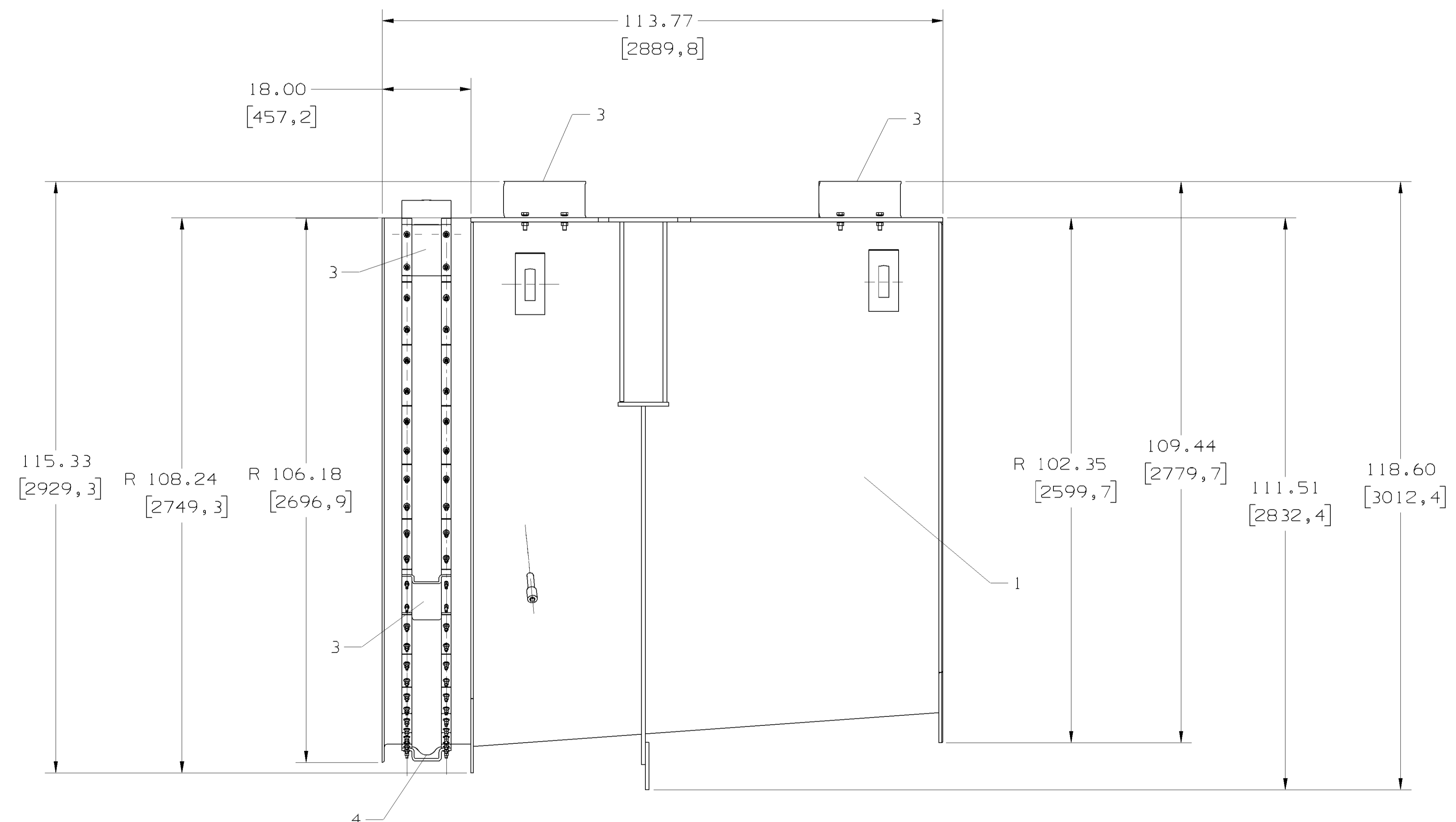
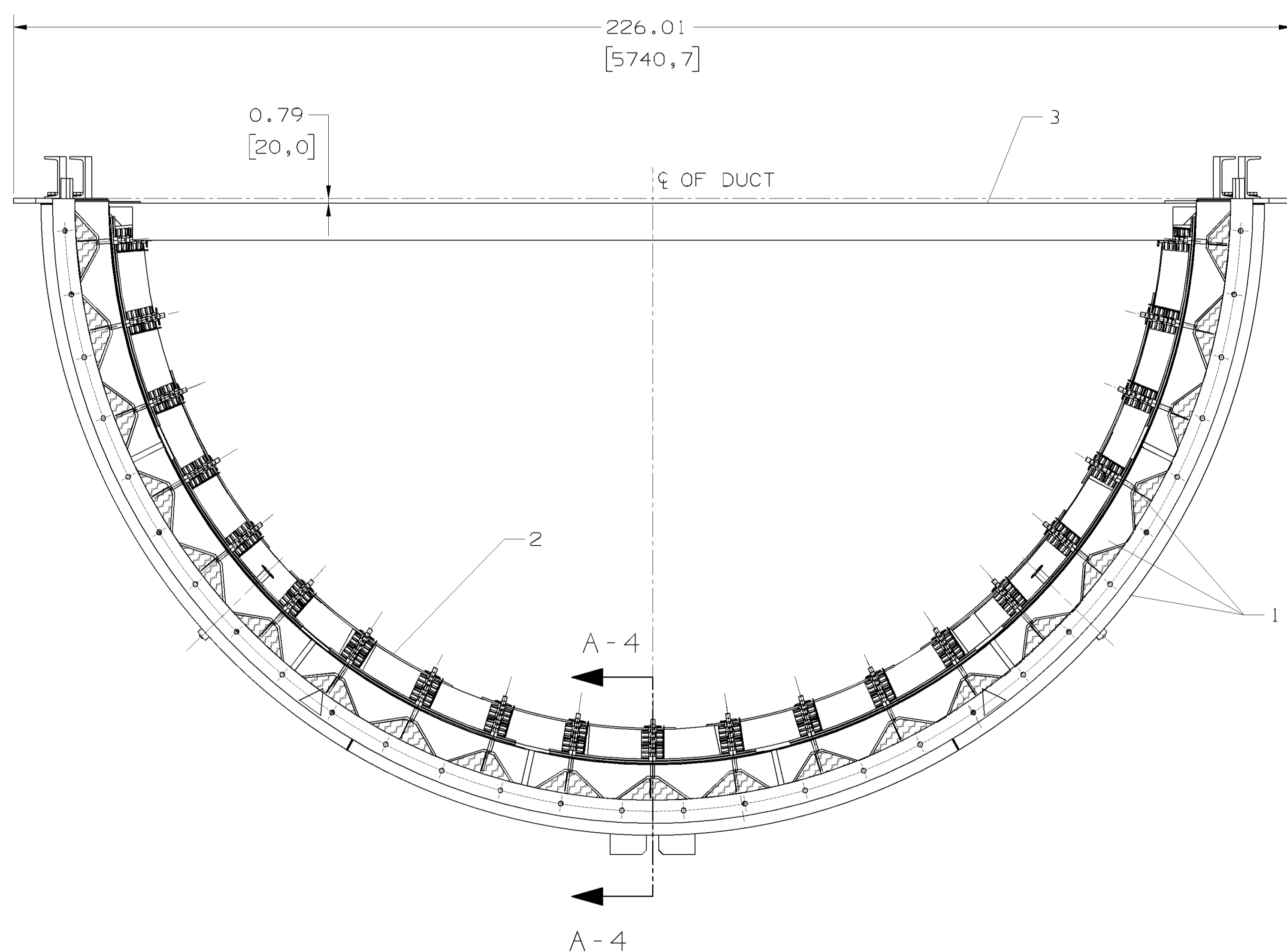
REVISIONS			
REV	DESCRIPTION	DATE	APPROVED

REVISE ON CAD ONLY
 UG PART: 123E1045G001
 (SPEC: 123E1045)

REP	QTY (SEE NOTE 1)	DESCRIPTION	INCH (MM)	DRAWING
1	1	STRUCTURE		146E1168
2	1	INTERNAL INSULATION		146E1192
3	1	FRAME FOR SHIPMENT		146E2868
4	1	EXPANSION JOINT BELT		146E1555
5	208	M12 NUT HEIGHT .48 (12.2)		ASTM A194M GRADE 8
6	104	M12 WASHER THICKNESS .10 (2.5)		ASTM F436 TYPE 1



ISOMETRIC VIEW



SECTION A-A (B-7)

1	GENERAL APPLIED PRACTICE	389A4331P460
1T	NOMENCLATURE	1 IDENT
LIST OF COMPLEMENTARY DOCUMENTS		

UNLESS OTHERWISE SPECIFIED:
 DIMENSIONS ARE IN INCHES
 TOLERANCES ON:
 2 PL DECIMALS ±
 3 PL DECIMALS ±
 ANGLES ±
 FRACTIONS ±

SIGNATURES: DRANKY LU LAIDI 09-11-04, CHENG LIU ZHANZHI 09-11-04, ENGRS LIU ZHANZHI 09-11-04, ISSUED LU LAIDI 09-11-05

DATE: 09-11-04

GE Power Generation

7FA DIFFUSER
 BOTTOM AFT HALF ARRANGEMENT
 FIRST MADE FOR ML-7K1WFA1-12 A042

APPLIED PRACTICES 348A9200

123E1045

SCALE: SHEET 1

© COPYRIGHT 2009 GENERAL ELECTRIC COMPANY
 PROPRIETARY INFORMATION-THIS DOCUMENT CONTAINS PROPRIETARY INFORMATION OF GENERAL ELECTRIC COMPANY AND MAY NOT BE USED OR DISCLOSED TO OTHERS, EXCEPT WITH THE WRITTEN PERMISSION OF GENERAL ELECTRIC COMPANY.

